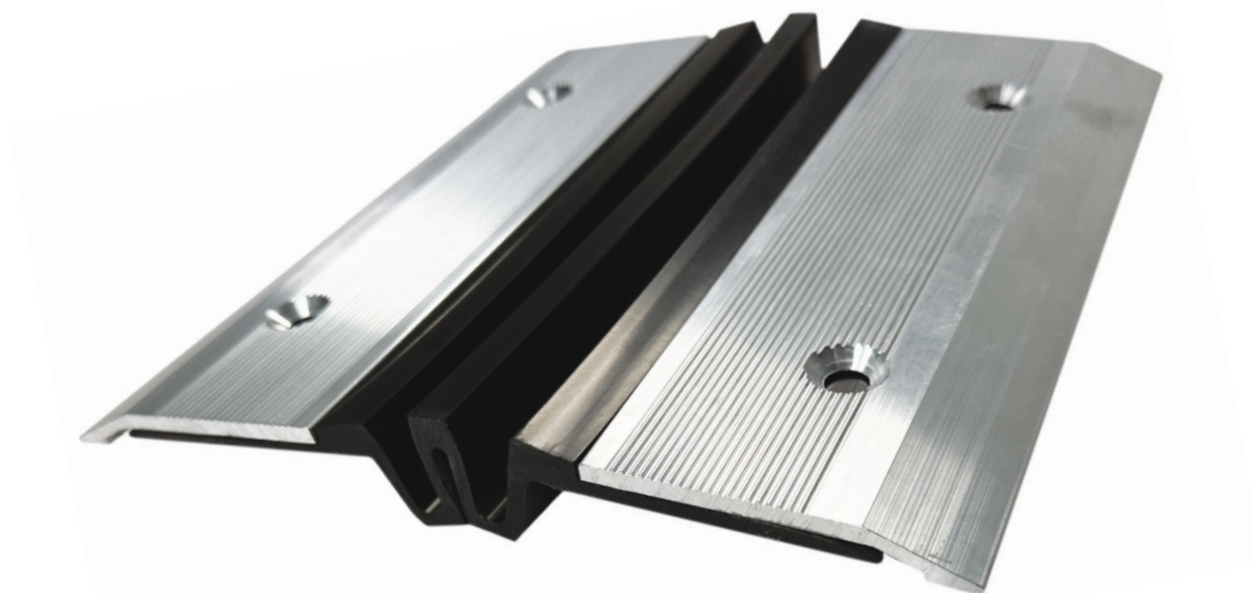
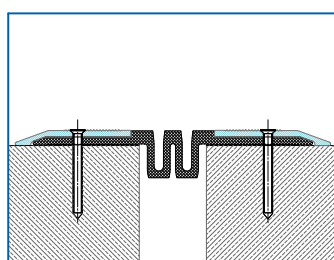


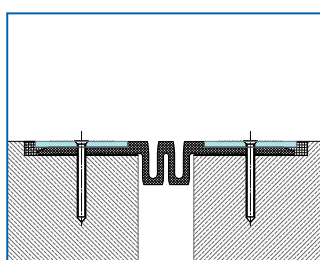
TECHNICAL DATA SHEET



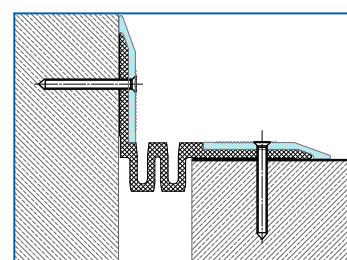
The system is highly appreciated by the designers for aesthetic look, easy installation. Valued by and investors for eciency, reliability as well as aordable price. Because of long term warranty, our system became sought solution for new facilities, especially for parking places requiring immediate reconstruction. In case of where heat insulation and concrete overlay are required, for example parking places located above trade area, it is possible to use an additional tight membrane in floor slab insulation. Joint has successfully undergone a variety of aging resistance tests proving durability and eectiveness. The system is resistant to aggressive chemicals (like gasoline, diesel fuel, oils, lubricants), UV rays and external conditions. Joint meets the class E fire resistance requirements in accordance with PN-EN 13501-1 standard, which requires that products are capable of resisting - for a short period of time - influence of a small flame without considerably spreading it.



SL 210.50 N



SL 210.50 W



SL 210.50 CV

Conecto PARK SL	Visible element [mm]	Gap width [mm]	Method of installation	Installation height [mm]	Material type	Maximum load [kN]	Horizontal/Vertical compensation [mm]
SL 210.50 N	235	Max 50	cover	10	aluminium PVC	450	60 (± 30) 40 (± 20)
SL 210.50 W	210	Max 50	groove	10	aluminium PVC	450	60 (± 30) 40 (± 20)
SL 210.50 CV	145	Max 50	corner	10	aluminium PVC	450	60 (± 30) 40 (± 20)

We have also SL230.70 version N, W, CV for max gap 70mm and max movements +45mm and +/-20mm