

TECHNICAL DATA SHEET
Types of clips:

S - width 15-35 mm

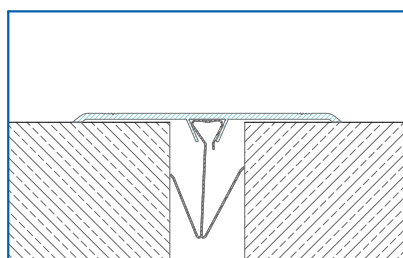
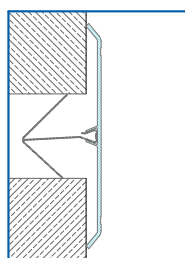
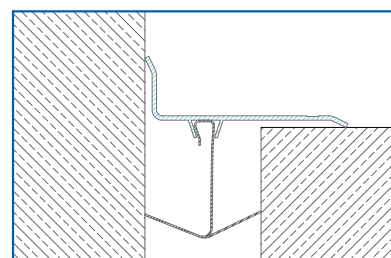
M - width 35-80 mm

L - width 70-120 mm


Aesthetic clip-mounted expansion joint cover. The cover made of anodized aluminum is mainly used to cover a gap on wall and ceiling seams ranging from 2 to 15 cm width in places where incombustible materials usage is required. The slim surface element makes it very popular in places where cover profiles should not be too exposed. The installation is exceptionally quick and easy with metal flexiclips.

ADVANTAGES

- installation is possible after plasters are completed
- can be painted in the wall's color
- possibility do adjust clips to joint width


cover floor version

cover wall version

corner version

Conecto JW	Visible element [mm]	Gap width [mm]	Method of installation	Material type	Color
JW 50	50	max 30	cover	aluminium / PVC	anode
JW 70	70	max 50	cover	aluminium / PVC	anode
JW 90	90	max 70	cover	aluminium / PVC	anode
JW 120	120	max 100	cover	aluminium	anode
JW 140	140	max 120	cover	aluminium	anode